



Numbers analysis for small and medium business

TABLE OF CONTENTS

I	The functioning principle of Analyzer	3
I.1	The functioning principle	3
I.2	The analysis window.....	5
I.2.1	The analysis module	5
	1. Compare	5
	2. Choose a reference period.....	5
	3. Choose period of comparison	5
	4. Isolate a criterion of analysis.....	6
I.2.2	The display window	7
I.2.3	The options bar.....	7
II	Importing or inputting data.....	8
II.1	Import Export Tab	8
II.1.1	Information relating to the current file.....	8
II.1.2	Internal back-ups	9
II.1.3	External Import Export.....	9
II.1.4	Importing data from an external file	10
II.2	Tab User Information	13
II.3	Tab Analyzer	14
II.4	Manual input of data in Analyzer	14
III	Producing reports and charts.....	16
III.1	Simple analysis reports	16
III.2	Comparative analysis reports	18
III.3	Producing charts	20
IV	Installation.....	24
V	Updates	25
VI	Appendix	26

I The functioning principle of Analyzor

I.1 The functioning principle

The analysis of your company's data or your personal transactions is something to which you attach particular importance.

Analysing revenues and expenses has never been as crucial as today, but there is often not enough time to install the tools to do this, and many of these tools need an IT specialist to function properly.

Analyzor can analyse your revenues, expenses or any type of transaction with surprising ease.

To explain as simply as possible how Analyzor works, imagine that every time you issue a customer invoice or you make a transaction, you save these transactions in a file that can contain thousands of lines.

This type of transaction has three basic elements:

A date

A description or wording

An amount

To complete and better describe this transaction, let's add

An additional digital field (quantity, number of hours etc.)

An additional heading (product family, commercial, region etc.)

By way of example, below is the list of invoices of a wine-producing company which has sold wine to the restaurants in its region:

Invoice date	Grape	Customer	Quantity	Amount
27/04/2010	Syrah	Hakkasan	12.00	144.00
28/04/2010	Chasselas	The Fat Duck	48.00	720.00
29/04/2010	Cabernet Sauvignon	Gallagher's	24.00	288.00
29/04/2010	Viognier	Gramercy Tavern	18.00	189.00
30/04/2010	Gamay	21 Club	12.00	144.00

or a list of professional expenses:

Date	Family	Description		Amount
27/04/2010	Transport	Parking		12.00
28/04/2010	Transport	Parking		36.00
29/04/2010	Trip expenses	Restaurant		288.00
29/04/2010	Trip expenses	Hôtel		150.00
30/04/2010	Furnitures	Paper for Laserprinter		48.00

You manage your company with an IT system (management programme, accounting programme, or simply a set of Excel tables), that keeps track of all your revenues and expenses.

If your company's IT system contains all these data, does it meet your needs when you ask the following questions?

- What is our turnover this quarter compared to the previous quarter? Or to last year?
- How have our phone expenses evolved over the last six months?
- Who is my best salesman this month? Last year?
- What are our best sales today in this region?
- Who can make me a chart of our monthly expenses? (I have a meeting in one hour)
- In which sector does Julie work better than Thomas?

Analyzor will import these data from your IT system and present them to you in an organized and prioritized manner.

You can thus analyse in a few seconds a period of activity (year, quarter, month or week) by cross-checking the different criteria, and compare this period with any other (previous year, quarter of the year before last, previous month or group of months, previous weeks or the comparable week of previous years).

You can write reports containing and summarizing the data of the period you have chosen, as well as comparative reports, or you can compare the reference period with any other period in time.

In another click you can create charts (bar graphs, sectors etc.) that you can personalize very easily.

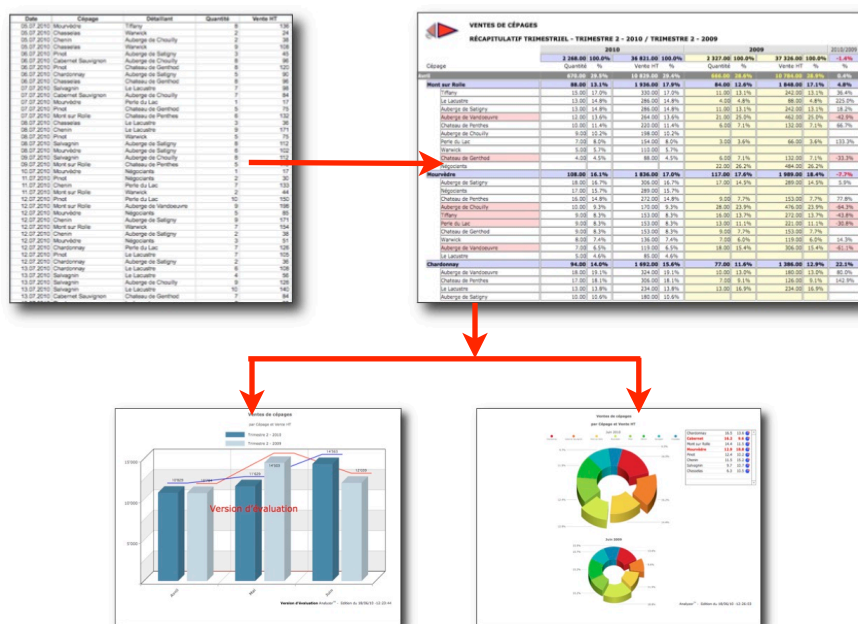
Analyzor imports your company data in all standard market formats (TXT, TAB, CSV, WKS, WK1, Sylk, Basic, Dbase etc.)

You can also input manually and save these different data in Analyzor.

In fact Analyzor contains ten storage areas where you can deposit and call up different types of transaction at will.

The folder «Analyzor Imports» contains several examples of revenue or expense files that you can import to familiarize yourself rapidly with Analyzor's numerous possibilities.

In summary, on the basis of raw data from a standard IT system, (example below left), you obtain in several clicks of the mouse a prioritized comparative report (figure right). Different types of charts can be generated corresponding to the report chosen.



I.2 The analysis window

The analysis window is composed of three parts:

- The analysis module (at the top of the screen)
- The display window (in the middle of the screen)
- The option bar (at bottom of the screen)

1) COMPARE

From one year to another
contiguous periods
discontiguous periods
free periods

2) CHOOSE PERIOD

Current week
- Current Month +
Current quarter
Current Year

3) CHANGE COMPARATIVE

Back to 2010

4) ISOLATE CRITERION

Grape
Restaurant

2011 COMPARED TO 2010

Release form title:

FEBRUARY 2011					FEBRUARY 2010				
Grape	Restaurant	Date	Quantity	Amount	Grape	Restaurant	Date	Quantity	Amount
Chardonnay	21 Club	01/02/2011	7.00	126.00	Zinfandel	Hakkasan	01/02/2010	10.00	165.00
Gamay	St John	02/02/2011	8.00	141.20	Gamet	Gramercy Tavern	01/02/2010	8.00	96.00
Chardonnay	Mercer Kitchen	02/02/2011	4.00	72.00	Malbec	Hakkasan	01/02/2010	1.00	22.00
Zinfandel	Gramercy Tavern	03/02/2011	6.00	99.00	Gewurztraminer	Peter Luger	01/02/2010	3.00	54.00
Gamay	Boisdale of Belgravia	03/02/2011	6.00	105.90	Syrah	Boisdale of Belgravia	01/02/2010	4.00	68.00
Zinfandel	Gotham Bar and Grill	03/02/2011	3.00	49.50	Merlot	21 Club	01/02/2010	6.00	74.40
Sauvignon	St John	03/02/2011	9.00	126.00	Merlot	The Fat Duck	02/02/2010	5.00	62.00
Zinfandel	21 Club	03/02/2011	5.00	82.50	Chardonnay	Mercer Kitchen	02/02/2010	6.00	108.00
Malbec	21 Club	03/02/2011	5.00	110.00	Gamet	Gramercy Tavern	02/02/2010	1.00	12.00
Viognier	Peter Luger	04/02/2011	3.00	58.50	Viognier	Gramercy Tavern	02/02/2010	4.00	78.00
Viognier	Mercer Kitchen	04/02/2011	4.00	78.00	Syrah	Boisdale of Belgravia	03/02/2010	1.00	17.00
Detailed list (102)				Total	Detailed list (94)				Total
				541.00					507.00
				9 294.95					8 380.70
				%					%
				7 %					11 %

Options chosen : Compare periods - Display by Grape - Comparison criterion : Quantity - Progressive sorting

SHOW SUMMARY **Memorize** **Show** **Options chosen** **Compare periods** **Criterion 1 Grape** **Criterion 2 Quantity** **Progressive** **Show 1 Criterion** **Selected period** **Import Export Settings** **New data entry or change** **Quit**

I.2.1 The analysis module

Once the data are imported, the Analyzor analysis module allows you to choose the analysis and comparison options:

1) COMPARE

From one year to another
contiguous periods
discontiguous periods
free periods

2) CHOOSE PERIOD

Current week
- Current Month +
Current quarter
Current Year

3) CHANGE COMPARATIVE

Back to 2010

4) ISOLATE CRITERION

Grape
Restaurant

2011 COMPARED TO 2010

Release form title:

FEBRUARY 2011					FEBRUARY 2010				
Grape	Restaurant	Date	Quantity	Amount	Grape	Restaurant	Date	Quantity	Amount
Chardonnay	21 Club	01/02/2011	7.00	126.00	Zinfandel	Hakkasan	01/02/2010	10.00	165.00
Gamay	St John	02/02/2011	8.00	141.20	Gamet	Gramercy Tavern	01/02/2010	8.00	96.00
Chardonnay	Mercer Kitchen	02/02/2011	4.00	72.00	Malbec	Hakkasan	01/02/2010	1.00	22.00
Zinfandel	Gramercy Tavern	03/02/2011	6.00	99.00	Gewurztraminer	Peter Luger	01/02/2010	3.00	54.00
Gamay	Boisdale of Belgravia	03/02/2011	6.00	105.90	Syrah	Boisdale of Belgravia	01/02/2010	4.00	68.00
Zinfandel	Gotham Bar and Grill	03/02/2011	3.00	49.50	Merlot	21 Club	01/02/2010	6.00	74.40
Sauvignon	St John	03/02/2011	9.00	126.00	Merlot	The Fat Duck	02/02/2010	5.00	62.00
Zinfandel	21 Club	03/02/2011	5.00	82.50	Chardonnay	Mercer Kitchen	02/02/2010	6.00	108.00
Malbec	21 Club	03/02/2011	5.00	110.00	Gamet	Gramercy Tavern	02/02/2010	1.00	12.00
Viognier	Peter Luger	04/02/2011	3.00	58.50	Viognier	Gramercy Tavern	02/02/2010	4.00	78.00
Viognier	Mercer Kitchen	04/02/2011	4.00	78.00	Syrah	Boisdale of Belgravia	03/02/2010	1.00	17.00
Detailed list (102)				Total	Detailed list (94)				Total
				541.00					507.00
				9 294.95					8 380.70
				%					%
				7 %					11 %

Options chosen : Compare periods - Display by Grape - Comparison criterion : Quantity - Progressive sorting

SHOW SUMMARY **Memorize** **Show** **Options chosen** **Compare periods** **Criterion 1 Grape** **Criterion 2 Quantity** **Progressive** **Show 1 Criterion** **Selected period** **Import Export Settings** **New data entry or change** **Quit**

1. Compare

- one year against another (e.g. June 2010 compared to June 2009)
- consecutive periods (e.g. May-June 2009 compared to March-April 2010)
- non-consecutive periods (e.g. 2nd quarter 2010 compared to 4th quarter 2009)
- free periods (e.g. period from 11 to 15 July 2010 compared to the period from 11 to 15 April 2009)

2. Choose a reference period

- Current week, previous weeks, following weeks
- Current month, previous months, following months
- Current quarter, previous quarters, following quarters
- Current year, previous years, following years
- Year closing in a month other than December

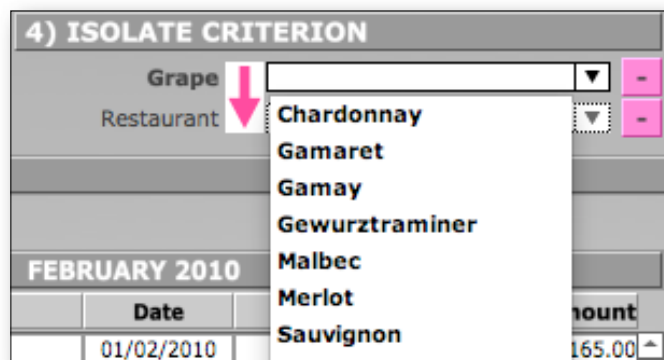
3. Choose period of comparison

- In function of the type of comparison and the reference period chosen, previous and following periods

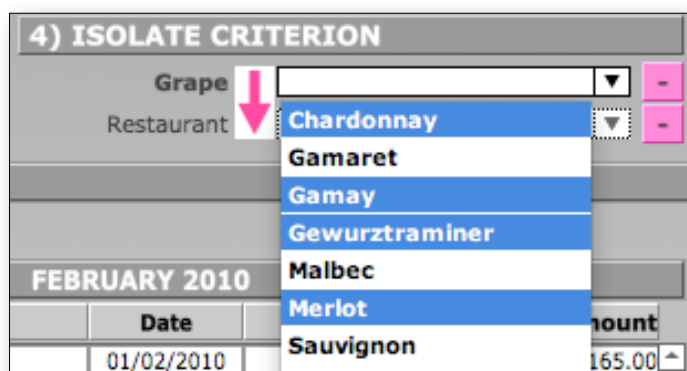
4. Isolate a criterion of analysis

- Isolate possibly one or several criteria to follow their progression over time.

To isolate a criterion, click on the field corresponding to the desired criterion.



Several criteria can be chosen simultaneously by pressing the key «cmd» (MacOS) or «ctrl» (Windows). Press «Return» to validate your choice.



To inverse the order of criteria, click on the pink arrow. Click again on the pink arrow to restore the original order of criteria.

I.2.2 The display window

The display window displays an extract of the data imported according to the comparison preferences chosen previously.

2011 COMPARED TO 2010									
Release form title: <input type="text"/>									
FEBRUARY 2011					FEBRUARY 2010				
Grape	Restaurant	Date	Quantity	Amount	Grape	Restaurant	Date	Quantity	Amount
Chardonnay	21 Club	01/02/2011	7.00	126.00	Zinfandel	Hakkasan	01/02/2010	10.00	165.00
Gamay	St John	02/02/2011	8.00	141.20	Gamaret	Gramercy Tavern	01/02/2010	8.00	96.00
Chardonnay	Mercer Kitchen	02/02/2011	4.00	72.00	Malbec	Hakkasan	01/02/2010	1.00	22.00
Zinfandel	Gramercy Tavern	03/02/2011	6.00	99.00	Gewurztraminer	Peter Luger	01/02/2010	3.00	54.00
Gamay	Boisdale of Belgravia	03/02/2011	6.00	105.90	Syrah	Boisdale of Belgravia	01/02/2010	4.00	68.00
Zinfandel	Gotham Bar and Grill	03/02/2011	3.00	49.50	Merlot	21 Club	01/02/2010	6.00	74.40
Sauvignon	St John	03/02/2011	9.00	126.00	Merlot	The Fat Duck	02/02/2010	5.00	62.00
Zinfandel	21 Club	03/02/2011	5.00	82.50	Chardonnay	Mercer Kitchen	02/02/2010	6.00	108.00
Malbec	21 Club	03/02/2011	5.00	110.00	Gamaret	Gramercy Tavern	02/02/2010	1.00	12.00
Viognier	Peter Luger	04/02/2011	3.00	58.50	Viognier	Gramercy Tavern	02/02/2010	4.00	78.00
Viognier	Mercer Kitchen	04/02/2011	4.00	78.00	Syrah	Boisdale of Belgravia	03/02/2010	1.00	17.00
Detailed list (102)			Total	541.00	9 294.95	Detailed list (94)			Total
			%	7 %	11 %				507.00
									8 380.70

The quantified data are totaled, and a percentage of increase or decrease is calculated against the period of comparison.

I.2.3 The options bar

The options bar allows you to compare the numerical or alphanumerical criteria and to display or print reports or charts in function of the choice of these criteria.

The options bar also provides access to Analyzor's settings, to the import and internal back-up functions, and to the manual input of your company or personal data.

Options chosen : Compare periods - Display by Grape - Comparison criterion : Quantity - Progressive sorting									
Printing Options									
SHOW SUMMARY	Memorize	Options chosen	Compare periods	Criterion 1 Grape	Criterion 2 Quantity	Progressive	Show 1 Criterion	Selected period	Import Export Settings
	Show								New data entry or change
									Quit

As the options are chosen, the options line, located just above the options bar, clearly displays the way in which the data will be displayed or printed, and in which form the chart will be calculated.

The buttons of the options bar are «switch» buttons; they can have several values.

- Display/print – summary table/chart
Pressing this button displays or prints the report or chart selected
- Memorise
This button memorises the local choices of the options bar. It then turns green.
- Display/print
Displays or prints reports or charts
- Options selected/Months only/Criteria only
'Options selected' displays the reports corresponding to the choice of the following criteria.
'Months only' displays only the months, not the criteria
'Criteria only' displays only the criteria, not the months
- Compare periods/current year
Displays simple or comparative reports or charts
- Criterion 1 and Criterion 2
Displays one of the two criteria (alphanumerical or numerical) that will be the determining criterion in the report or chart
- Progressive/alphabetical
Determines the sorting method of the report
- Display 1 criterion/Display 2 criteria
Displays one or two determining criteria of the report (to be cross-checked with criterion 1 and/or criterion 2)
- Period chosen/Cumulative
Displays the previous options or produces a cumulative report (the whole of the file in the memory)

II Importing or inputting data

This module can be accessed by clicking on the button «Import/export Settings» on the options bar.

1 ANALYZOR™ English 3

Import / Export User Information Analyzer

INFORMATION ON THE CURRENT FILE (20000 RECORDS)

Copy Imported titles

Criterion 1 * Grape
Criterion 2 * Restaurant
Criterion 3 * Quantity
Criterion 4 * Amount

Overview

	A....Z	1....9
Gewurztraminer		
Hakkasan		
		9.00
		162.00

Name of current file* Demo English
Release form title

* Input required

INTERNAL BACKUP

	Files stored	Storage date	Nb	
Clear 1	Demo Français	04/02/2011	20000	Import 1
Clear 2	Demo English	04/02/2011	20000	Import 2
Clear 3	Demo Deutsch	04/02/2011	20000	Import 3
Clear 4	Demo Espanol	04/02/2011	20000	Import 4
Clear 5	Demo Italiano	04/02/2011	20000	Import 5
Storage 6				
Storage 7				
Storage 8				
Storage 9				
Storage 10				

Recovery of data after import
Internal backup now
Export saved files
Create new file

EXTERNAL IMPORT EXPORT

Upload File Do not cumulate imports Export Tab/Txt Resetting the numbering of exports

☒ Automatic internal backup Under name of

Quit Back

II.1 Import Export Tab

A tab bar enables you to display

- The import/export options (Import/export)
- The user preferences (User Information)
- the description of Analyzer and updating of data (Analyzer)

The Import/Export tab contains three distinct parts:

- information relating to the current file
- internal back-ups
- external imports/exports

II.1.1 Information relating to the current file

INFORMATION ON THE CURRENT FILE (20000 RECORDS)

Copy Imported titles

Criterion 1 * Grape
Criterion 2 * Restaurant
Criterion 3 * Quantity
Criterion 4 * Amount

Overview

	A....Z	1....9
Gewurztraminer		
Hakkasan		
		9.00
		162.00

Name of current file* Grape sales
Release form title

* Input required

The banner of this part indicates the number of recordings (or lines) imported.

After importing, the names of the alphanumerical and numerical criteria must be input without fail, as well as the name of the file.

A preview allows you to browse forward and back in the import file (left and right arrows) in order to locate the fields to import and to name them correctly.

The button «Recopy imported titles» allows you to automatically fill the fields «Criterion» if the import file contains heading titles (as Excel files usually do).

II.1.2 Internal back-ups

Ten storage areas are available to back up and call up from memory ten different files:

INTERNAL BACKUP					
		Files stored	Storage date	Nb	
Clear 1		Demo Français	04/02/2011	20000	Import 1
Clear 2		Demo English	04/02/2011	20000	Import 2
Clear 3		Demo Deutsch	04/02/2011	20000	Import 3
Clear 4		Demo Espanol	04/02/2011	20000	Import 4
Clear 5		Demo Italiano	04/02/2011	20000	Import 5
	Storage 6				
	Storage 7				
	Storage 8				
	Storage 9				
	Storage 10				

Recovery of data after import

Internal backup now

Export saved files

Create new file

One can imagine backing up turnover per salesperson, sales per region, professional or personal expenses, or any other type of transaction.

The buttons Storage 1 to 10 allow you to store the different files.

The buttons Delete 1 to 10 allow you to delete a file from its storage area

The buttons Import 1 to 10 retrieve from the memory the file chosen.

The four buttons situated on the right allow you to:

- retrieve the file previously in the memory in the event of import error
- trigger an immediate internal back-up of the file in the memory

In this case, if the file has already been backed up in one of the ten storage areas and if the quantity of files in memory differs from that already stored, the file in memory will crush the file stored.

If the file has never been stored, it will be stored in the first available area.

- Export all the files stored in text format on the computer desktop
- Create a new file (in case of manual input) after having backed up the file possibly contained in the memory.

II.1.3 External Import Export

EXTERNAL IMPORT EXPORT			
Upload File	Do not cumulate imports	Export	Tab/Txt
<input checked="" type="checkbox"/> Automatic internal backup	Under name of <input type="text"/>		
Resetting the numbering of exports			

The button «Import File» allows you to locate a file external to Analyzor in order to import its content.

Tick the box «automatic internal back-up» to systematically save the content of the memory before importing other types of data.

Pressing the button «Do not cumulate imports» changes it into «Cumulate imports». Use this option to add data to existing data in memory. In this case, the titles of the criteria previously imported will be conserved.

Example: importing sales turnover from the northern region, then the eastern, western and southern regions, contained in separate files: the titles of the fields are imported when the first file is imported. When importing the subsequent files, the names of the fields recorded in the first import will be conserved.

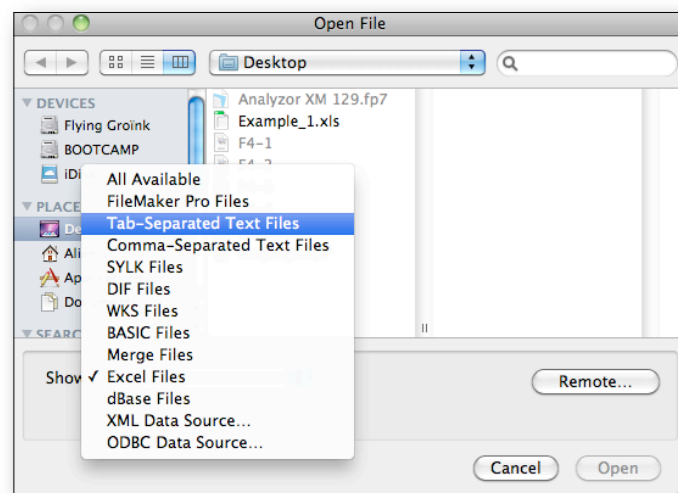
II.1.4 Importing data from an external file

Data from external files will have to be imported in the precise «fields» of Analyzor. The user will therefore have to make the structure of the file to be imported correspond with the internal structure of Analyzor.

The internal structure of Analyzor contains five «fields»:

- a date
- a first alphanumerical field
- a second alphanumerical field
- a first numerical field
- a second numerical field

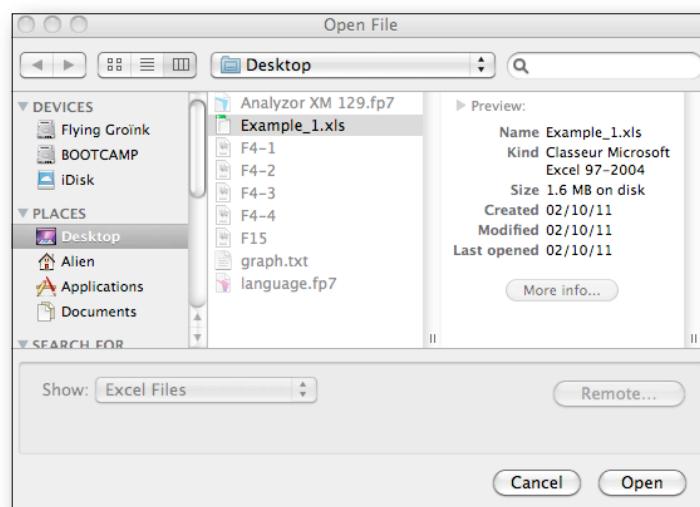
When the button «Import file» is activated, an import window opens on the screen:



Then choose the type of file to be imported.

Analyzor accepts all types of standard file, including FileMaker Pro, tabulated text (.TXT ou .TAB), separator semi-colon (CSV), Excel, dBase, XML, and ODBC.

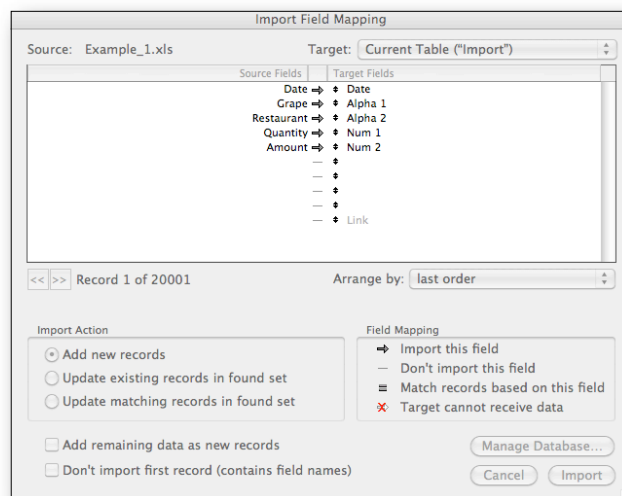
After choosing the file type (e.g. an Excel file) file, point to the file whose content is to be imported.



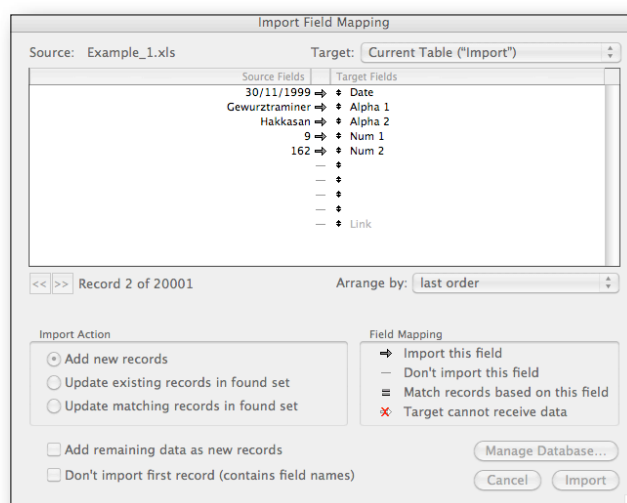
Then double-click on the file selected.

Analyzer's import window then appears.

When importing an Excel file containing column titles, align the column titles with the Analyzer fields as shown in the example below.



When importing another type of file (e.g. tabulated text), you need to align the content of the fields to be imported with the internal structure of Analyzer:



You therefore need to be very familiar with the structure and nature of the data contained in the files to be imported, before importing them into Analyzer.

Once the data are imported from the external file, it is vital to name the alphanumerical and numerical fields of Analyzer.

INFORMATION ON THE CURRENT FILE (20001 RECORDS)			
	Copy Imported titles	<	Overview >
Criterion 1 *	Alpha 1	A...Z	Chasselas
Criterion 2 *	Alpha 2	A...Z	Tiffany
Criterion 3 *	Num 1	1...9	3.00
Criterion 4 *	Num 2	1...9	36.00

In the example above, we have imported a file of the tabulated text type.

We will therefore name the Analyzer fields as follows:

Criterion 1 >-----Grape variety
 Criterion 2 >-----Retailer
 Criterion 3 >-----Quantity
 Criterion 4 >-----Amount

Once Analyzer's internal fields are named, you need to give a name to the imported file. This name, which it is compulsory to input, will serve to locate the file in order to back it up or retrieve it from memory.

When importing an Excel file or a file whose first recording contains the field titles, press the button «Recopy imported titles» to automatically fill the internal fields of Analyzer with the data contained in the first recording of the file.

Criterion	Field Name	Data
Criterion 1*	Alpha 1	A...Z Grape
Criterion 2*	Alpha 2	A...Z Restaurant
Criterion 3*	Num 1	1...9
Criterion 4*	Num 2	1...9

The first recording of the imported file will automatically fill the fields Criterion 1, Criterion 2, Criterion 3 and Criterion 4, and Analyzer will then delete the first recording of the imported file and only save the raw data, as in the example below.

Reply «ok» in the dialogue box to recopy the field names in Analyzer.

Criterion	Field Name	Data
Criterion 1*	Grape	A...Z Gewurztraminer
Criterion 2*	Restaurant	A...Z Hakkasan
Criterion 3*	Quantity	1...9 9.00
Criterion 4*	Amount	1...9 162.00

The names of the fields are now imported. Then give a name to the imported file before being able to analyse the data.

NB: It is mandatory to import at least one date, one alphanumerical field and one numerical field.

The button «Export» allows you to export onto your computer desktop the contents of the current file in «.TXT» or «Excel» format. The button «Don't open the file» or «Open the file» gives you the choice of opening or not opening the file exported.

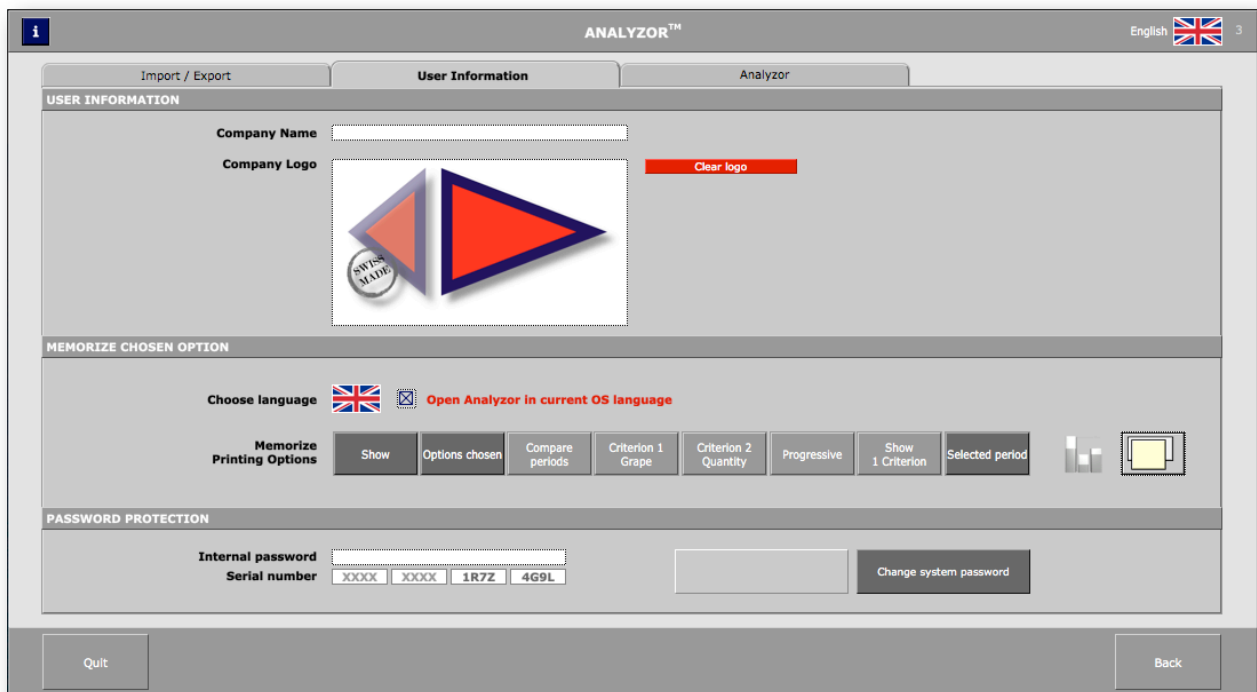
By default, the name of the file exported is type «EXP_140610_1.txt», where «EXP» is the name of the file, «140610» the date of export, and «_1» the sequential export number. Several exports of the current file will create export files «EXP_140610_1.txt», «EXP_140610_2.txt», «EXP_140610_3.txt» etc.

If a file name is input in the field «Under the name», the files will be exported under the name «My file_1.txt», «My file_2.txt», «My file_3.txt» etc.

The button «reset exports» restarts the numbering of files exported at 1.

II.2 Tab User Information

This tab allows the user to insert his own logo, which will appear on the reports printed by Analyzor in place of the Analyzor logo.



It also enables the memorising of the most frequently used options of the options bar. In order of the buttons, from left to right:

- Display or print
- Display the options chosen, months only or criteria only
- Compare periods or display the reference period only
- Use one of the two alphanumerical criteria as leading criterion
- Use one of the two numerical criteria as leading criterion
- Display the statuses sorted by progressive numerical criteria or by alphabetical order
- Display reports containing 1 or 2 criteria
- Display the options above or all the data contained in the file (Cumulative)
- Display the charts systematically
- Display a second window when drafting reports and charts

The evaluation version of Analyzor, valid 30 days from its first use, is converted to a definitive version as soon as the product user licence is purchased.

Upon purchase of the Analyzor user licence, an encrypted identification code with 16 positions is sent by e-mail to the user, who will input it by pressing the button «Enter a series number». The series number input is analysed and allows unlimited use of the functionalities of Analyzor.

NB : An Analyzer user licence can be installed on a maximum of two central units.

Click on «Write to info@analyzer.ch» to send an e-mail to Analyzer's development team.
If the product has been purchased, the client identification number will appear on the e-mail.

II.4 Manual input of data in Analyzor

[illegible]

If information is already entered, the alphanumeric fields display a list of values containing the data already entered.

Pressing the blue button on the left of the date inserts the day's date.
Pressing the blue button to the left of the quantity inserts the figure 1 by default.
The buttons «+» and «-» allow you to enter positive or negative values.
The buttons «++» and «--» allow you to block the input of positive or negative values.

It is however possible to delete a line from this window by activating the button «Authorise deletion», then the red button «Delete» located on the entry line to be deleted.

Page 14 of 27
[Back to Table of Contents](#)

FILE DEMO ENGLISH (20000 RECORDS) - DATA ENTRY MODULE

Empty entry

Grape Restaurant Date Quantity Amount Validate Input

3/25/2010

March 2010

03/25/2010

CH 2010

Current day

Grape	Restaurant	Quantity	Amount	
Gamay	▼ Mercer Kitchen	10.00	176.50	Clear
Merlot	▼ Gotham Bar and	2.00	24.80	Clear
Syrah	▼ Boisdale of	5.00	85.00	Clear
Vignier	▼ Boisdale of	2.00	39.00	Clear
Gamaret	▼ St John	8.00	96.00	Clear

Today: 3/6/11

You may have to enter into Analyzor a series of transactions with the same date, previous to the current date: for example, enter all the invoices of 25 March of last year.


Enter this input date in the second heading located under the band "Date". In this way all the entries made will bear the date indicated in this heading, until you delete its contents.

NB: When this heading is empty, the date entered is the current date, unless the user indicates a different date.

III Producing reports and charts

The reports generated by Analyzor are presented as follows:

III.1 Simple analysis reports

		MONTHLY SUMMARY - JUNE 2011			
		568.00	100.0%	9 275.25	100.0%
Grape		Quantity	%	Amount	%
June		568.00	100.0%	9 275.25	100.0%
Malbec		74.00	13.0%	1 628.00	17.6%
Mercer Kitchen		14.00	18.9%	308.00	18.9%
Boisdale of Belgravia		14.00	18.9%	308.00	18.9%
21 Club		13.00	17.6%	286.00	17.6%
Hakkasan		9.00	12.2%	198.00	12.2%
Gramercy Tavern		9.00	12.2%	198.00	12.2%
The Fat Duck		7.00	9.5%	154.00	9.5%
Gotham Bar and Grill		6.00	8.1%	132.00	8.1%
Gallagher's		2.00	2.7%	44.00	2.7%
Zinfandel		91.00	16.0%	1 501.50	16.2%
The Fat Duck		18.00	19.8%	297.00	19.8%
21 Club		17.00	18.7%	280.50	18.7%
Gallagher's		16.00	17.6%	264.00	17.6%
St John		14.00	15.4%	231.00	15.4%
Mercer Kitchen		10.00	11.0%	165.00	11.0%
Peter Luger		7.00	7.7%	115.50	7.7%
Boisdale of Belgravia		7.00	7.7%	115.50	7.7%
Hakkasan		2.00	2.2%	33.00	2.2%
Garnet		91.00	16.0%	1 092.00	11.8%
21 Club		20.00	22.0%	240.00	22.0%
The Fat Duck		19.00	20.9%	228.00	20.9%
St John		19.00	20.9%	228.00	20.9%
Hakkasan		19.00	20.9%	228.00	20.9%
Boisdale of Belgravia		12.00	13.2%	144.00	13.2%
Mercer Kitchen		2.00	2.2%	24.00	2.2%
Syrah		59.00	10.4%	1 003.00	10.8%
Gramercy Tavern		16.00	27.1%	272.00	27.1%
Peter Luger		13.00	22.0%	221.00	22.0%
St John		10.00	16.9%	170.00	16.9%
Mercer Kitchen		9.00	15.3%	153.00	15.3%
The Fat Duck		6.00	10.2%	102.00	10.2%
Gallagher's		5.00	8.5%	85.00	8.5%

This report displays the data of the reference period (year, quarter, month or week)


In this example, Analyzor has been asked to display a report with the following options:

- Current year
- Criterion 1 : Grape variety
- Criterion 2 : Sales excl. tax
- Progressive sorting
- Display 2 criteria

The percentages indicate the weighting of each criterion in the higher criterion, and the percentage of the higher criterion is calculated in relation to the period (in the example, the month of June).

The display and print options of the options bar are memorised in the «Settings» part of Analyzor. Any change in options in the options bar only lasts as long as the time for display and printing, as the values of the options bar set by default reappear after writing the report.


It is however possible to memorise 'on the fly' the display and print options by clicking on the «Memorise» button of the options bar. Pressing again on this button redisplay the options by default.



QUARTERLY SUMMARY - QUARTER 2 - 2011

	1 650.00	100.0%	27 525.80	100.0%
Month	Quantity	%	Amount	%
April	458.00	27.8%	7 669.40	27.9%
May	624.00	37.8%	10 581.15	38.4%
June	568.00	34.4%	9 275.25	33.7%

The display and print option of this other simple report corresponds to the value «Months only» of the button «Options chosen». The selected sorting is progressive.



QUARTERLY SUMMARY - QUARTER 2 - 2011

	1 650.00	100.0%	27 525.80	100.0%
Grape	Quantity	%	Amount	%
Malbec	219.00	13.3%	4 818.00	17.5%
Mercer Kitchen	33.00	15.1%	726.00	15.1%
Gramercy Tavern	32.00	14.6%	704.00	14.6%
Gallagher's	30.00	13.7%	660.00	13.7%
21 Club	27.00	12.3%	594.00	12.3%
Boisdale of Belgravia	25.00	11.4%	550.00	11.4%
Gotham Bar and Grill	24.00	11.0%	528.00	11.0%
The Fat Duck	15.00	6.8%	330.00	6.8%
Hakkasan	13.00	5.9%	286.00	5.9%
St John	10.00	4.6%	220.00	4.6%
Peter Luger	10.00	4.6%	220.00	4.6%
Syrah	232.00	14.1%	3 944.00	14.3%
Gramercy Tavern	42.00	18.1%	714.00	18.1%
21 Club	39.00	16.8%	663.00	16.8%
Boisdale of Belgravia	35.00	15.1%	595.00	15.1%
Peter Luger	23.00	9.9%	391.00	9.9%
The Fat Duck	21.00	9.1%	357.00	9.1%
Mercer Kitchen	18.00	7.8%	306.00	7.8%
St John	16.00	6.9%	272.00	6.9%
Gotham Bar and Grill	14.00	6.0%	238.00	6.0%
Gallagher's	14.00	6.0%	238.00	6.0%
Hakkasan	10.00	4.3%	170.00	4.3%
Viognier	157.00	9.5%	3 061.50	11.1%
Gallagher's	23.00	14.6%	448.50	14.6%

The display and print option of this other simple report corresponds to the value «Criteria only» of the button «Options chosen». The display options provide for the display of 2 criteria.

III.2 Comparative analysis reports

MONTHLY SUMMARY - APRIL 2011 / APRIL 2010									
	2011				2010				2011/2010
	458.00	100.0%	7 669.40	100.0%	565.00	100.0%	9 671.25	100.0%	
Grape	Quantity	%	Amount	%	Quantity	%	Amount	%	%
April	458.00	100.0%	7 669.40	100.0%	565.00	100.0%	9 671.25	100.0%	-20.7%
Malbec	64.00	14.0%	1 408.00	18.4%	107.00	18.9%	2 354.00	24.3%	-40.2%
Gallagher's	18.00	28.1%	396.00	28.1%	19.00	17.8%	418.00	17.8%	-5.3%
Gramercy Tavern	15.00	23.4%	330.00	23.4%					
Boisdale of Belgravia	8.00	12.5%	176.00	12.5%	7.00	6.5%	154.00	6.5%	14.3%
Mercer Kitchen	7.00	10.9%	154.00	10.9%	10.00	9.3%	220.00	9.3%	-30.0%
The Fat Duck	6.00	9.4%	132.00	9.4%	13.00	12.1%	286.00	12.1%	-53.8%
21 Club	6.00	9.4%	132.00	9.4%	34.00	31.8%	748.00	31.8%	-82.4%
Gotham Bar and Grill	4.00	6.3%	88.00	6.3%					
Peter Luger					24.00	22.4%	528.00	22.4%	
Viognier	64.00	14.0%	1 248.00	16.3%	46.00	8.1%	897.00	9.3%	39.1%
Gotham Bar and Grill	17.00	26.6%	331.50	26.6%	18.00	39.1%	351.00	39.1%	-5.6%
Gallagher's	16.00	25.0%	312.00	25.0%					
The Fat Duck	10.00	15.6%	195.00	15.6%	2.00	4.3%	39.00	4.3%	400.0%
Boisdale of Belgravia	10.00	15.6%	195.00	15.6%	3.00	6.5%	58.50	6.5%	233.3%

This display option displays the comparative period chosen just before writing the report. The percentages of increase or decrease of the periods compared are calculated on the second numerical criterion (in the example, the Amount) and appear on the right of the table.

The report extracts below display for the same reference period (a given quarter):


A comparative report by criterion N° 1 (in the example, «Restaurant») and criterion N° 2 (« Amount ») The comparative percentages are calculated on criterion N° 2 (« Amount »)

QUARTERLY SUMMARY - QUARTER 2 - 2011 / QUARTER 2 - 2010									
	2011				2010				2011/2010
	1 650.00	100.0%	27 525.80	100.0%	1 584.00	100.0%	26 269.90	100.0%	
Restaurant	Quantity	%	Amount	%	Quantity	%	Amount	%	%
21 Club	241.00	14.6%	3 778.70	13.7%	212.00	13.4%	3 586.20	13.7%	5.4%
Boisdale of Belgravia	216.00	13.1%	3 636.90	13.2%	169.00	10.7%	2 663.55	10.1%	36.5%
Mercer Kitchen	167.00	10.1%	2 972.75	10.8%	179.00	11.3%	3 024.85	11.5%	-1.7%
Gallagher's	160.00	9.7%	2 853.05	10.4%	142.00	9.0%	2 467.50	9.4%	15.6%
St John	167.00	10.1%	2 702.80	9.8%	132.00	8.3%	2 122.60	8.1%	27.3%
The Fat Duck	155.00	9.4%	2 540.05	9.2%	142.00	9.0%	2 387.90	9.1%	6.4%
Gotham Bar and Grill	150.00	9.1%	2 478.30	9.0%	172.00	10.9%	2 775.75	10.6%	-10.7%
Gramercy Tavern	134.00	8.1%	2 424.45	8.8%	138.00	8.7%	2 188.00	8.3%	10.8%
Peter Luger	146.00	8.8%	2 325.60	8.4%	181.00	11.4%	3 111.60	11.8%	-25.3%
Hakkasan	114.00	6.9%	1 813.20	6.6%	117.00	7.4%	1 941.95	7.4%	-6.6%


The same report with a change of criterion N° 2 («Quantity»)
The comparative percentages are calculated on criterion N° 2 («Quantity»)

QUARTERLY SUMMARY - QUARTER 2 - 2011 / QUARTER 2 - 2010									
	2011				2010				2011/2010
	27 525.80	100.0%	1 650.00	100.0%	26 269.90	100.0%	1 584.00	100.0%	
Restaurant	Amount	%	Quantity	%	Amount	%	Quantity	%	%
21 Club	3 778.70	13.7%	241.00	14.6%	3 586.20	13.7%	212.00	13.4%	13.7%
Boisdale of Belgravia	3 636.90	13.2%	216.00	13.1%	2 663.55	10.1%	169.00	10.7%	27.8%
St John	2 702.80	9.8%	167.00	10.1%	2 122.60	8.1%	132.00	8.3%	26.5%
Mercer Kitchen	2 972.75	10.8%	167.00	10.1%	3 024.85	11.5%	179.00	11.3%	-6.7%


A comparative report by criterion N° 1 (in the example, «Grape») and criterion N° 2 («Amount»)
The comparative percentages are calculated on criterion N° 2 (« Amount»)

 QUARTERLY SUMMARY - QUARTER 2 - 2011 / QUARTER 2 - 2010									
Grape	2011				2010				2011/2010
	1 650.00	100.0%	27 525.80	100.0%	1 584.00	100.0%	26 269.90	100.0%	4.8%
	Quantity	%	Amount	%	Quantity	%	Amount	%	%
Malbec	219.00	13.3%	4 818.00	17.5%	208.00	13.1%	4 576.00	17.4%	5.3%
Syrah	232.00	14.1%	3 944.00	14.3%	137.00	8.6%	2 329.00	8.9%	69.3%
Vioignier	157.00	9.5%	3 061.50	11.1%	107.00	6.8%	2 086.50	7.9%	46.7%
Zinfandel	173.00	10.5%	2 854.50	10.4%	153.00	9.7%	2 524.50	9.6%	13.1%
Sauvignon	195.00	11.8%	2 730.00	9.9%	173.00	10.9%	2 422.00	9.2%	12.7%
Gamaret	202.00	12.2%	2 424.00	8.8%	185.00	11.7%	2 220.00	8.5%	9.2%
Chardonnay	134.00	8.1%	2 412.00	8.8%	155.00	9.8%	2 790.00	10.6%	-13.5%
Gewurztraminer	131.00	7.9%	2 358.00	8.6%	150.00	9.5%	2 700.00	10.3%	-12.7%
Merlot	139.00	8.4%	1 723.60	6.3%	182.00	11.5%	2 256.80	8.6%	-23.6%
Gamay	68.00	4.1%	1 200.20	4.4%	134.00	8.5%	2 365.10	9.0%	-49.3%



The same report with a change of criterion N° 2 («Quantity»)
The comparative percentages are calculated on criterion N° 2 («Quantity»)

 QUARTERLY SUMMARY - QUARTER 2 - 2011 / QUARTER 2 - 2010									
Grape	2011				2010				2011/2010
	27 525.80	100.0%	1 650.00	100.0%	26 269.90	100.0%	1 584.00	100.0%	4.2%
	Amount	%	Quantity	%	Amount	%	Quantity	%	%
Syrah	3 944.00	14.3%	232.00	14.1%	2 329.00	8.9%	137.00	8.6%	69.3%
Malbec	4 818.00	17.5%	219.00	13.3%	4 576.00	17.4%	208.00	13.1%	5.3%
Gamaret	2 424.00	8.8%	202.00	12.2%	2 220.00	8.5%	185.00	11.7%	9.2%
Sauvignon	2 730.00	9.9%	195.00	11.8%	2 422.00	9.2%	173.00	10.9%	12.7%

This report displays another reference period: the current year compared to the previous year. The option «months only» has been chosen, as well criterion N° 2 «Quantity» as criterion of comparison.

 ANNUAL SUMMARY - YEAR 2011 / YEAR 2010									
Month	2011				2010				2011/2010
	112 413.50	100.0%	6 734.00	100.0%	114 242.40	100.0%	6 842.00	100.0%	-1.6%
	Amount	%	Quantity	%	Amount	%	Quantity	%	%
January	9 823.65	8.7%	605.00	9.0%	10 457.15	9.2%	616.00	9.0%	-1.8%
February	9 294.95	8.3%	541.00	8.0%	8 380.70	7.3%	507.00	7.4%	6.7%
March	7 649.90	6.8%	457.00	6.8%	9 530.45	8.3%	573.00	8.4%	-20.2%
April	7 669.40	6.8%	458.00	6.8%	9 671.25	8.5%	565.00	8.3%	-18.9%
May	10 581.15	9.4%	624.00	9.3%	7 102.75	6.2%	434.00	6.3%	43.8%
June	9 275.25	8.3%	568.00	8.4%	9 495.90	8.3%	585.00	8.6%	-2.9%
July	8 181.00	7.3%	513.00	7.6%	11 581.70	10.1%	691.00	10.1%	-25.8%
August	10 025.25	8.9%	606.00	9.0%	10 011.45	8.8%	593.00	8.7%	2.2%
September	10 435.15	9.3%	623.00	9.3%	10 057.80	8.8%	600.00	8.8%	3.8%
October	10 334.15	9.2%	605.00	9.0%	9 448.85	8.3%	570.00	8.3%	6.1%
November	9 907.00	8.8%	584.00	8.7%	9 157.50	8.0%	543.00	7.9%	7.6%
December	9 236.65	8.2%	550.00	8.2%	9 346.90	8.2%	565.00	8.3%	-2.7%

III.3 Producing charts

To generate a chart, press the button  , which changes to 
The options of the options bar remain the same as those selected before.

The chart below displays the following options:

Reference period: Current quarter
Name of file: «Demo English»
Criterion N° 1 : «Restaurant»
Criterion N° 2 : «Quantity»

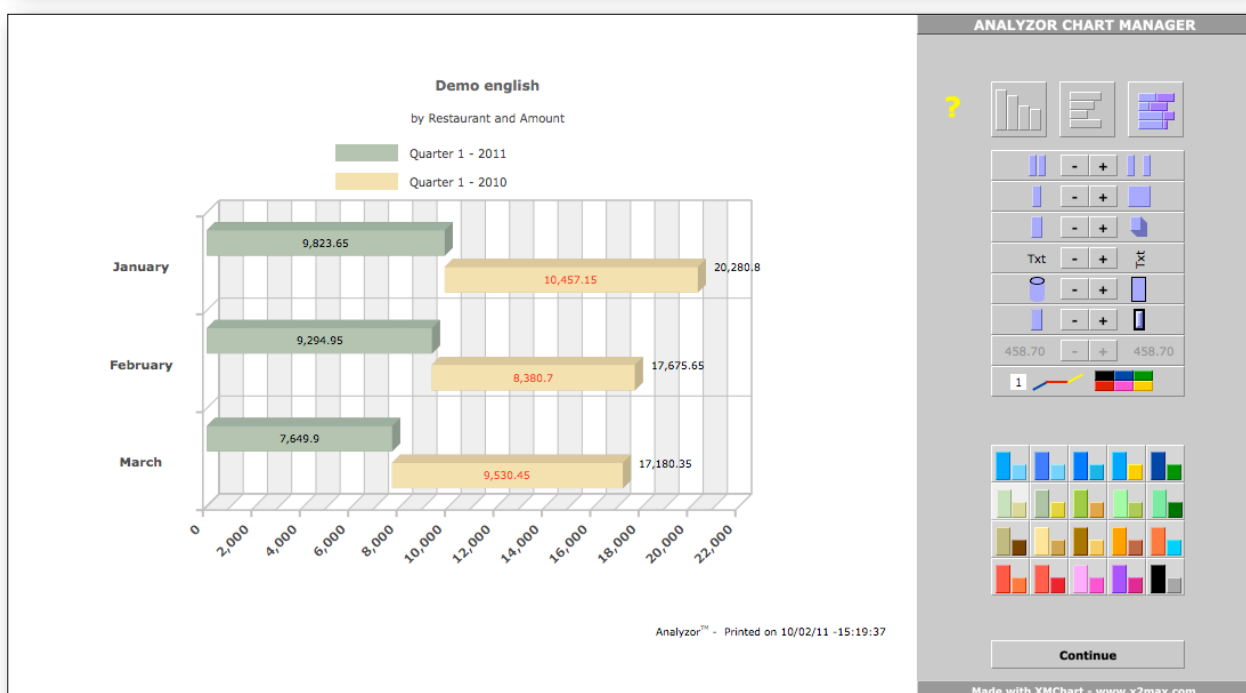
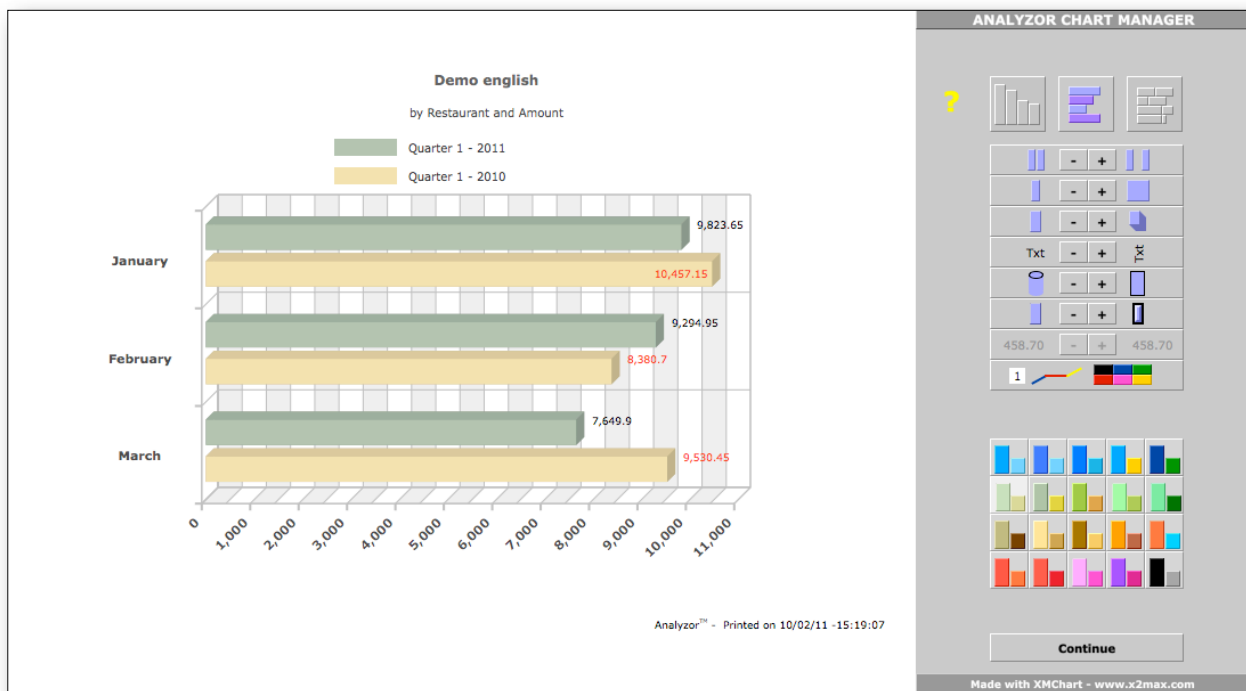


The «Analyzer Chart Manager» allows you to personalise rapidly and intuitively the charts generated. All the options chosen are memorised 'on the fly' and remain in place for the next chart.

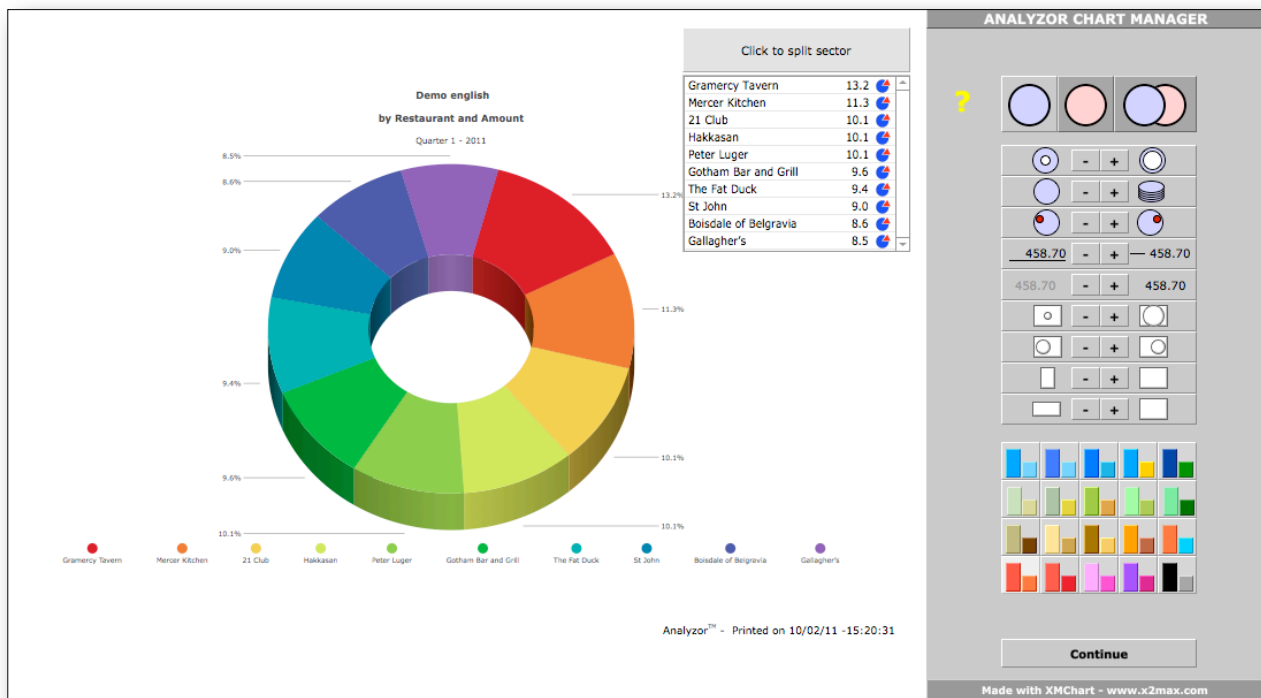
Change and memorise

- the spacing of the bars
- the thickness of the bars
- the depth of the chart
- the orientation of the text captions
- the shape of the bars (bars or cylinders)
- the thickness of the bar lines
- the presence of captions, quantified or not
- the colour of the tracking lines (Press 1 or 2 for line 1 or line 2)
- the colour of the bars

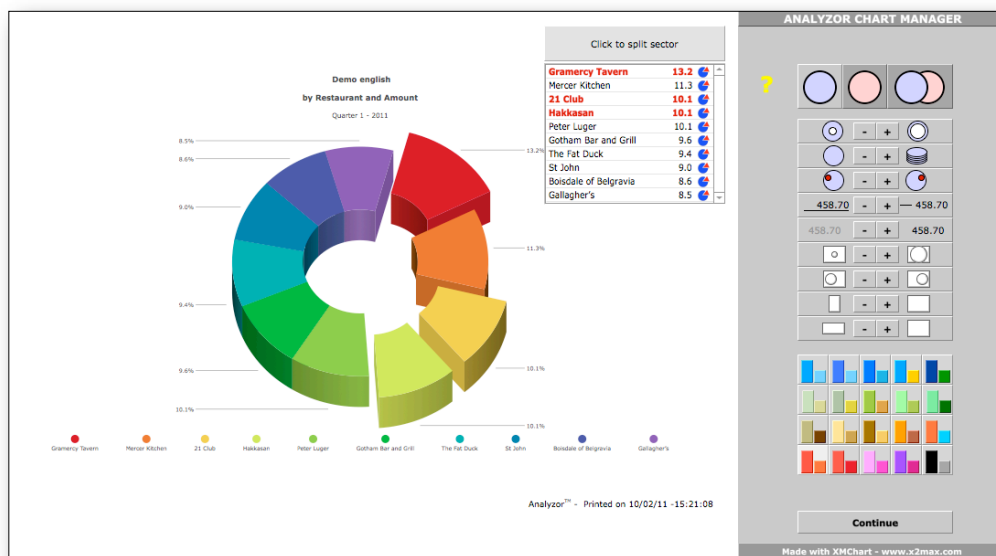
Choose for the same options several graphic presentations (bar charts, bars, fragmented bars)



If the option «Criteria only» is selected, the chart generated is displayed by sector:



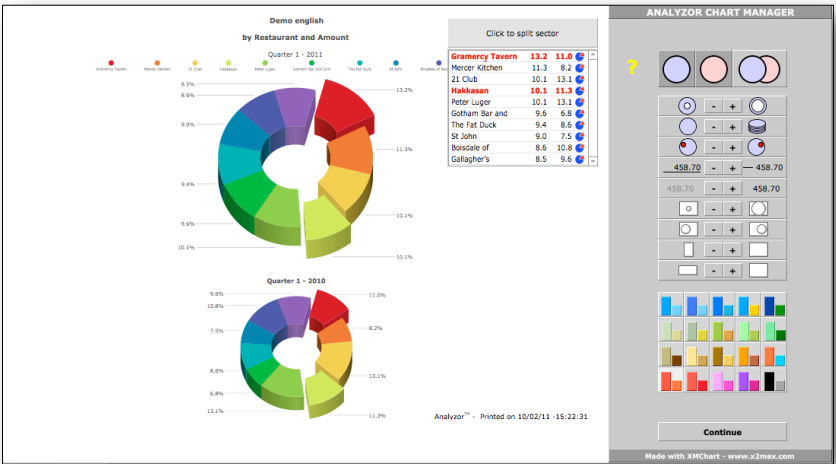
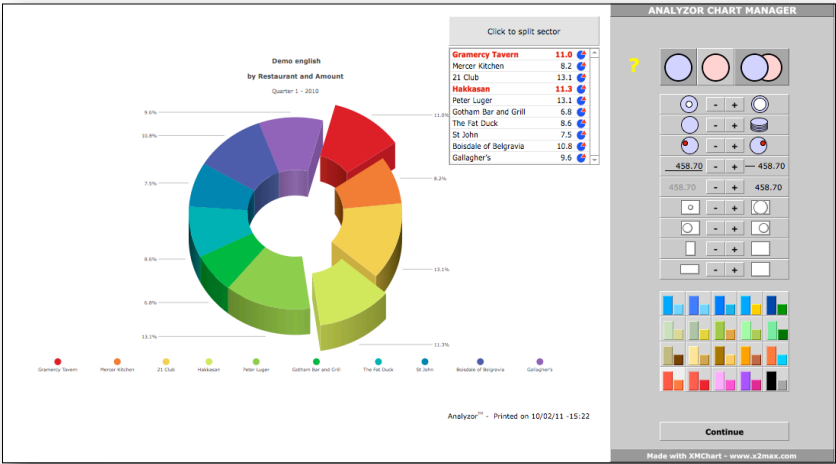
Click in the window displaying the criteria and their percentages on one or several criteria to 'burst' the sector graph:



Check

- the size of the sector rings
- the depth of the graph
- the rotation of the graph
- the size of the graph
- the laterality
- the width
- the height
- and... the colour ranges!

The following options display the graph of the comparative period and the graph of the two periods compared.



The options of comparison other than «from one year to another» generate charts by sector.

The bar charts and horizontal bars are generated solely by selecting the display options «Options chosen» and «Months only».

IV Installation

The folder containing the Analyzer files is made up of the following elements:

Version Runtime MacOS (does not need FileMaker Pro licence)

- Analyzer Starter (application launcher)
- Analyzer.USR (file containing the data)
- Analyzer Doc.FR (user manual in French)
- The folder Analyzer Imports (contains sample files)
- The folder Extensions containing
 - a folder Dictionaries (utility files)
 - the plugin xmCHART.fmpplugin (Plugin chart generator)

Slide the folder towards the desired position (Desktop, Documents folder etc.) and double-click on the Analyzer Starter file to launch Analyzer.

Version Runtime Windows (does not need FileMaker Pro licence)

- Analyzer Starter (application launcher)
- Analyzer.USR (File containing the data)
- Analyzer Doc.FR (user manual in French)
- The folder Analyzer Imports (contains sample files)
- The folder Extensions containing
 - a folder Dictionaries (utility files)
 - the plugin xmCHART.fmx (Plugin chart generator)

Slide the folder towards the desired position (Desktop, Documents folder etc.) and double-click on the Analyzer Starter file to launch Analyzer.

Version FileMaker MacOS (needs a licence FileMaker Pro version 9, 10 or 11 and more)

- Analyzer.FP7 (file containing the data)
- Analyzer Doc.FR (user manual in French)
- The folder Analyzer Imports (contains sample files)
- The plugin xmCHART.fmpplugin (Plugin chart generator)

Slide the folder towards the desired position (Desktop, Documents folder etc.) and slide the file xmCHART.fmpplugin into the Extensions folder of the FileMaker Pro application
Double-click on the Analyzer.FP7 file to launch Analyzer.

Version FileMaker Windows (needs a licence FileMaker Pro version 9, 10 or 11 and more)

- Analyzer.FP7 (file containing the data)
- Analyzer Doc.FR (user manual in French)
- The folder Analyzer Imports (contains sample files)
- The plugin xmCHART.fmx (Plugin chart generator)

Slide the folder towards the desired position (Desktop, Documents folder etc.) and slide the file xmCHART.fmpplugin into the Extensions folder of the FileMaker Pro application.
Double-click on the file Analyzer.FP7 to launch Analyzer.

NB: an Analyzer user licence can be installed on a maximum of two central units.

V Updates

The next versions of Analyzer will provide additional functionalities in terms both of calculation and of chart possibilities.

The update policy provides for all minor updates to be supplied free of charge and downloadable at the user's initiative on www.analyzer.ch

Procedure for updating and retrieval of data (Version Runtime)

Once the latest version is downloaded, change in the old Analyzer folder the file «Analyzer.USR» into the name «Analyzer old.USR»

- Slide the new «Analyzer.USR» file into the Analyzer folder
- Open the Analyzer application as usual (the new «Analyzer.USR» file is empty)
- Click on the button «Import/export Settings», then on the tab «Analyzer»
- Finally, click on the button «Import data from the previous version»

If the old file is not renamed «Analyzer old.USR» or if it is absent, the import of the data cannot take place.

The new file retains the licence attributes of the old file, if the licence has been purchased by the user. Otherwise the version remains an evaluation version.

Procedure for updating and retrieval of data (Version FileMaker)

Once the latest version is downloaded, change in the old Analyzer folder the file «Analyzer.FP7» into the name «Analyzer old.FP7»

- Slide the new file «Analyzer.FP7» into the Analyzer folder
- Open the Analyzer application as usual (the new «Analyzer.FP7» file is empty)
- Click on the button «Import/export Settings», then on the tab «Analyzer»
- Finally, click on the button «Import data from the previous version»

If the old file is not renamed «Analyzer old.FP7» or if it is absent, the import of the data cannot take place.

The new file retains the licence attributes of the old file, if the licence has been purchased by the user. Otherwise the version remains an evaluation version.

VI Appendix

USER LICENCE

PLEASE READ THE PRESENT LICENCE AGREEMENT CAREFULLY BEFORE USING THIS SOFTWARE. THE USE OF THIS SOFTWARE IMPLIES ACCEPTANCE OF THE TERMS OF THE PRESENT LICENCE AGREEMENT. IF YOU DO NOT ACCEPT THE TERMS OF THE PRESENT AGREEMENT, YOU ARE REQUESTED TO REFRAIN FROM USING THE SOFTWARE AND TO RETURN IT TO THE PLACE YOU OBTAINED IT IN ORDER TO BE REIMBURSED.

The Analyzer™ application enclosed, (the "Software"), supplied by RLC is not sold to the user. Use is granted to him/her under the terms of the present Licence, RLC reserving all rights not explicitly granted to the user. The user is the owner of the device on which the software is saved, but RLC retains the ownership rights of the Software itself.

1. Licence. The present Licence authorises the user to:
 - (a) operate the Software on one computer at a time, i.e. to load it in live memory or install it on a mass memory (hard disk, etc.).
 - (b) make a copy of the Software in its original form for back-up purposes, on the express condition of repeating on the said copies the text on copyright and RLC rights of ownership appearing on the originals.
 - (c) assign his/her rights in a definitive manner to a third party under the terms of this Licence by supplying the latter with all copies of the Software in his/her possession, together with the present Licence and the Software documentation, provided that the said third party has read and approved the said Licence.
2. Restrictions. The Software contains production secrets. In order to protect these it is forbidden to DECOMPILE DISASSEMBLE OR REDUCE IN ANY MANNER WHATSOEVER THE SOFTWARE IN A FORM THAT IS HUMANLY DECIPHERABLE, OR TO MODIFY, ADAPT, TRANSLATE, RENT, ASSIGN IN HIRE-PURCHASE, LEND, SELL FOR PROFIT OR CREATE ANY ELEMENT BASED ON ALL OR PART OF THE SOFTWARE, without the express prior written agreement of RLC, in the framework of an exclusive or non-exclusive distribution contract.
3. Cancellation. The present Licence remains valid until cancelled. The licence can be cancelled without notice by RLC in the event the user does not respect the conditions specified herein. In such a case the user undertakes to destroy the Software, the accompanying documents and any copy that may have been made. Clauses 6, 7 and 8 hereafter remain valid after cancellation of the Licence.
4. Passwords. The Software which is the object of the present Licence contains functionalities that are protected by password(s). The user is not authorised to use, modify or delete these passwords, access to which is exclusively reserved for RLC, except with the prior written agreement of RLC. In the event that the user, with or without the written agreement of RLC, modifies the system of protection by password, as well as the names and positions of the headings, models and scripts contained in this Software, RLC declines any responsibility for the functioning of the Software. RLC would nevertheless remain owner of the sources of the Software, even after any modification carried out by the possessor of the user licence, whether or not RLC has given its agreement for these modifications.
5. Limitation of guarantee. RLC guarantees for a period of 90 days from the date of purchase that (i) the device on which the Software is saved is free of material or production defects for normal uses and that (ii) the said Software complies with the relevant specifications published RLC. The responsibility of RLC is solely limited, at its choice, to the replacement of the device(s), the reimbursement of the purchase price or the replacement of the Software.

EXCEPT FOR THE LIMITED GUARANTEE MENTIONED ABOVE, RLC AND ITS DEALERS OFFER NO GUARANTEE, WHETHER EXPLICIT OR TACIT, AS TO THE CONFORMITY OF THE SOFTWARE AND ITS DOCUMENTATION, OR TO THEIR ABILITY TO FULFILL A GIVEN FUNCTION. AS CERTAIN JURISDICTIONS DO NOT AUTHORISE THE EXCLUSION OF IMPLICIT GUARANTEES, THIS EXCLUSION MAY NOT APPLY.
6. Denial of responsibility. In no case can RLC, its subsidiaries, dealers, executives, employees or affiliates be held responsible for any accidental, inferred or indirect prejudices (loss of earnings, interruptions to activity, loss of commercial data, etc.) arising from the use of the Software or from an incapacity to use it, and this for whatever reason invoked, even if RLC or its representative has been alerted to the possibility of such prejudices. The responsibility of RLC for any real prejudice suffered by the user, for whatever reason invoked, can in no case exceed the amount paid for the purchase of the Software in question.

THIS LIMITATION DOES NOT APPLY IN THE EVENT OF DEATH, PERSONAL INJURY OR DESTRUCTION OF MATERIAL PROPERTY NORMALLY DESTINED FOR PRIVATE USE OR CONSUMPTION, WITHIN THE CONTEXT DETERMINED BY THE LAW. AS CERTAIN JURISDICTIONS DO NOT AUTHORISE THE DENIAL OF RESPONSIBILITY FOR ACCIDENTAL OR INFERRED PREJUDICES, THIS EXCLUSION MAY NOT APPLY.

7) Generalities. The present Licence is governed by the law of the French Republic. If any of its provisions is deemed to be contrary to a law by a competent tribunal, it will be applied to the maximum extent permitted, the other provisions of the Licence remaining fully valid. For the attention of the American administrative authorities, the operating licence of the Software is granted exclusively with "limited rights", as defined in paragraphs (c)(1) and (2) of the Commercial Computer Software-Restricted Rights, FAR 52.227-19.

RLC
Chemin de Pinchat 41
CH - 1227 Carouge
info@analyzor.ch